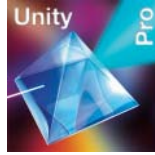


Unity Pro programming software for Modicon M340 **M**, Premium **P**, Atrium **A**, Quantum **Q** and Safety **S**



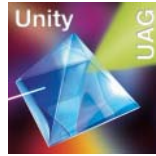
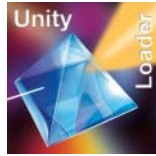
IEC 61131-3 languages	Instruction List (IL)	M	M - A - P
	Ladder (LD)	M	M - A - P
	Structured Text (ST)	M	M - A - P
	Function Block Diagram (FBD)	M	M - A - P
	Sequential Function Chart (SFC)/Grafcet	M	M - A - P
Programming services	Multitask programming (Master, fast and event-triggered)	M	M - A - P
	Multitask programming (Master, fast, auxiliary and event-triggered)		
	Functional view and function modules	M	M - A - P
	Block editor and DFB instances	M	M - A - P
	DDT compound data editor	M	M - A - P
	Data structure instances and tables	M	M - A - P
	EF function block libraries and EFB function blocks	M	M - A - P
	User-definable control loops		A (TSX PCI 2●) - P (TSX P57 2●)
	Programmable control loops (with process control FB library)	M	M - A - P
	Safety function block library		
	Motion function block libraries (MFB)	M	M - A - P
	Hot Standby PLC redundancy system		P (TSX H57 24M)
	System diagnostics	M	M - A - P
	Application diagnostics	M	M - A - P
	Diagnostics with location of error source	M	M - A - P
Debugging and display services	PLC simulator	M	M - A - P
	Hypertext link animations in graphic languages	M	M - A - P
	Step by step execution, breakpoint	M	M - A - P
	Watchpoint	M	M - A - P
	Operator screens	M	M - A - P
Other services	Diagnostic viewer	M	M - A - P
	Creation of hyperlinks	M	M - A - P
	XML import/export	M	M - A - P
	Application converters (Concept, PL7)		M - A - P
	Utilities for updating PLC operating systems	M	M - A - P
	Communicating drivers for Windows 2000/XP	M	M - A - P
Unity Pro servers - Openness			
UDE support	Dynamic exchange with 3rd party tools, OFS		
OFS exchanges	Static exchange via XML/XVM export files	M	M - A - P
Compatible Modicon platforms	Modicon M340 processors M	BMX P34 1000 BMX P34 20●0	BMX P34 1000 BMX P34 20●0
	Atrium slot-PLCs A	-	TSX PCI 57204M
	Premium CPUs P	-	TSX P57 C● 0244/0244M TSX P57 104/1634/154M TSX P57 204/2634/254M TSX H57 24M
	Quantum CPUs Q	-	-
	Safety CPUs S	-	-
Software name	Unity Pro Small	Unity Pro Medium	
Unity Pro software type	UNY SPU SF● CD40	UNY SPU MF● CD40	
Pages	43120-EN/32		

Unity Pro programming software for Modicon M340 M , Premium P , Atrium A , Quantum Q and Safety S

M - A - P - Q	M - A - P - Q	M - A - P - Q
M - A - P - Q	M - A - P - Q	M - A - P - Q - S
M - A - P - Q	M - A - P - Q	M - A - P - Q
M - A - P - Q	M - A - P - Q	M - A - P - Q - S
M - A - P - Q	M - A - P - Q	M - A - P - Q
M - A - P - Q	M - A - P - Q	M - A - P - Q
	P (TSX P57 5●) - Q (140 CPU 651/671)	P (TSX P57 5●) - Q (140 CPU 651/671)
M - A - P - Q	M - A - P - Q	M - A - P - Q - S
M - A - P - Q	M - A - P - Q	M - A - P - Q
M - A - P - Q	M - A - P - Q	M - A - P - Q
M - A - P - Q	M - A - P - Q	M - A - P - Q
M - A - P - Q	M - A - P - Q	M - A - P - Q
A (TSX PCI 2●/3●) - P (TSX P57 2●/3●/4●)	P (TSX P57 2●/3●/4●/5●)	P (TSX P57 2●/3●/4●/5●)
M - A - P - Q	M - A - P - Q	M - A - P - Q
		S
M - A - P	M - A - P	M - A - P
P (TSX H57 24/44M)	P (TSX H57 24/44M) - Q (140 CPU 67 160)	P (TSX H57 24/44M) - Q (140 CPU 67 160) - S
M - A - P - Q	M - A - P - Q	M - A - P - Q - S
M - A - P - Q	M - A - P - Q	M - A - P - Q
M - A - P - Q	M - A - P - Q	M - A - P - Q
M - A - P - Q	M - A - P - Q	M - A - P - Q - S
M - A - P - Q	M - A - P - Q	M - A - P - Q - S
M - A - P - Q	M - A - P - Q	M - A - P - Q - S
M - A - P - Q	M - A - P - Q	M - A - P - Q - S
M - A - P - Q	M - A - P - Q	M - A - P - Q - S
M - A - P - Q	M - A - P - Q	M - A - P - Q - S
M - A - P - Q	M - A - P - Q	M - A - P - Q - S
M - A - P - Q	M - A - P - Q	M - A - P - Q
M - A - P - Q	M - A - P - Q	M - A - P - Q
M - A - P - Q	M - A - P - Q	M - A - P - Q - S
	M - A - P - Q	M - A - P - Q - S
	M - A - P - Q	M - A - P - Q - S
M - A - P - Q	M - A - P - Q	M - A - P - Q - S
BMX P34 1000 BMX P34 20●0	BMX P34 1000 BMX P34 20●0	BMX P34 1000 BMX P34 20●0
TSX PCI 57204M TSX PCI 57354M	TSX PCI 57204M TSX PCI 57354M	TSX PCI 57204M TSX PCI 57354M
TSX P57 C● 0244/0244M TSX P57 104/1634/154M TSX P57 204/2634/254M TSX P57 304/3634/354M TSX P57 4634/454M TSX H57 24/44M	TSX P57 C● 0244/0244M TSX P57 104/1634/154M TSX P57 204/2634/254M TSX P57 304/3634/354M TSX P57 4634/454M TSX P57 5634/554M TSX P57 6634M TSX H57 24/44M	TSX P57 C● 0244/0244M TSX P57 104/1634/154M TSX P57 204/2634/254M TSX P57 304/3634/354M TSX P57 4634/454M TSX P57 5634/554M TSX P57 6634M TSX H57 24/44M
140 CPU 311 10 140 CPU 434 12U	140 CPU 311 10 140 CPU 434 12U 140 CPU 651 50/60 140 CPU 652 60 140 CPU 671 60	140 CPU 311 10 140 CPU 434 12U 140 CPU 651 50/60 140 CPU 652 60 140 CPU 671 60
-	-	140 CPU 651 60S 140 CPU 671 60S
Unity Pro Large	Unity Pro Extra Large	Unity Pro XL Safety
UNY SPU LF● CD40	UNY SPU EF● CD40	UNY SPU XF● CD31
43120-EN/33		

	<p>EF/EFB function development software in C language</p>	<p>SFC View application diagnostic and monitoring software</p>
		
<p>Services</p>	<p>Enhancement of EF and EFB function block libraries:</p> <ul style="list-style-type: none"> ■ Creation of families ■ Development of functions in C language ■ Access to all data and variable types ■ Debugging functions (step by step, breakpoint) ■ Use of functions created in all languages <p>Supplied with:</p> <ul style="list-style-type: none"> ■ Microsoft Visual C++ ■ GNU source code and compiler 	<p>ActiveX control component for monitoring and diagnostics of chart status (SFC or Grafcet) in sequential applications:</p> <ul style="list-style-type: none"> ■ Overview of charts and detailed views ■ Can be integrated in human/machine interface (HMI) applications ■ Access to PLC data via OFS (<i>OPC Factory Server</i>) <p>Includes EFB function block library for Unity Pro (for Modicon M340, Premium, Atrium and Quantum CPUs)</p>
<p>Compatibility</p>	<p>Software: Unity Pro Small, Medium, Large and Extra Large</p> <p>All CPUs:</p> <ul style="list-style-type: none"> ■ Modicon M340 ■ Atrium slot-PLCs ■ Premium Unity ■ Quantum Unity 	<p>Software: Unity Pro Extra Large</p> <p>All CPUs:</p> <ul style="list-style-type: none"> ■ Modicon M340 ■ Atrium slot-PLCs ■ Premium Unity ■ Quantum Unity
<p>Software name</p>	<p>Unity EFB Toolkit</p>	<p>Unity SFC View</p>
<p>Unity Pro software type</p>	<p>UNY SPU ZFU CD30E</p>	<p>UNY SDU MF CD20</p>
<p>Pages</p>	<p>43124-EN/3</p>	<p>43125-EN/5</p>

Comparison software for Unity Pro applications	Software for loading application and firmware components	Software for designing and generating batch/process applications	Pack for developing specific solutions
--	--	--	--



Automatic comparison of 2 Modicon M340, Premium, Atrium and Quantum applications with identification of all differences.

Simple and easy to use software to upgrade a Modicon M340 CPU when the user doesn't need to display/modify the application.

UAG specialist software for designing and generating batch/process applications in a "Collaborative Automation" environment. It provides the unique project database:

- Process and control (PLCs)
- HMI user interface (Magelis)
- SCADA supervision (Vijeo Citect)

Specialist software for developing made-to-order solutions (for example interfaces with an electrical CAD system, automatic application generator, etc):

- Access to Unity Pro object servers
- Reserved for IT development engineers using Visual Basic or C++

- Upload/download:
- CPU and Ethernet module firmware
 - PLC project, including:
 - Program
 - Located and unlocated data
 - User files and user web pages

Based around re-usable objects (PID, valves, etc) and complying with standard ISA S88, UAG generates the PLC code and the elements required for the HMI system. Complies with the GAMP standard (*Good Automation Manufacturing Practice*)

Software:
Unity Pro Extra Large

- All CPUs:**
- Modicon M340
 - Atrium slot-PLCs
 - Premium Unity
 - Quantum Unity

Software:
Unity Pro Small, Medium, Large and Extra Large

- All CPUs:**
Modicon M340

Software:
Unity Pro Extra Large

- All CPUs:**
- Premium Unity:
 - TSX P57 4634/454M
 - TSX P57 5634/554M
 - TSX P57 6634M
 - Quantum Unity

Software:
Unity Pro Extra Large

- All CPUs:**
- Modicon M340
 - Atrium slot-PLCs
 - Premium Unity
 - Quantum Unity

Unity Dif

UNY SDU DFU CD20

43429-EN/3

Unity Loader

UNY SMU ZU CD20

48351-EN/3

Unity Application Generator

UNY SEW L F CD30

–

Unity Developer's Edition

UNY UDE VFU CD21E

43120-EN/30